

Vocals

Through the Fire

Words and Music by
GERALD CRABB
Arranged by Bradley Knight

With confidence ♩ = 74

SOLO
mf

So man-y times— I've ques-tioned

cer - tain cir - cum-stanc - es, and things I could not un - der - stand.—

And man - y times— in tri - als,

weak-ness blurs my vi - sion, that's when my frus - tra - tion gets so out of

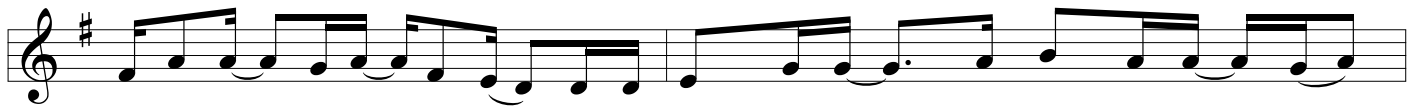
hand.— Oh, but it's then I am— re - mind - ed that I've

nev - er been— for - sak - en,— and I've nev - er had to stand one test—

a - lone.— Then I look at all— my vic - to - ries,— and the

Rehearsal time stamps are indicated before section changes throughout this piece.

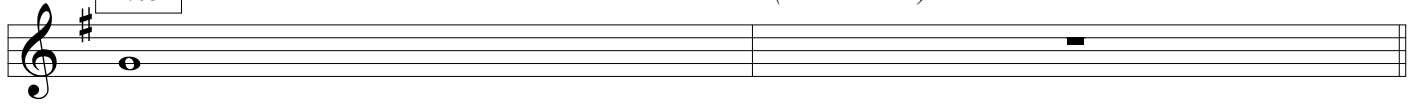




Spir-it ris - es up_ in me, and it's through the fire,_ my weak - ness is__ made_

1:03

(SOLO ad lib.)



strong.

f *CHOIR*

He nev - er prom - ised that the cross would not_ get heav - y, and the

22

hill would not be hard to_____ climb._

24

He nev - er of - fered our vic - t'ries with - out fight - ing, but He said_

26

SOLO

28

Just re -

help would al - ways come in time.

28

Detailed description: This system contains measures 28 and 29. It features a vocal line at the top and piano accompaniment below. The key signature is one sharp (F#). The vocal line begins with a rest in measure 28 and starts in measure 29 with the lyrics 'Just re - help would al - ways come in time.' The piano accompaniment consists of chords in the right hand and bass notes in the left hand, with some notes beamed together.

30

mem - ber when you're stand - ing in the val - ley of de - ci - sion, and the

Ooo

30

Detailed description: This system contains measures 30 and 31. The vocal line continues with the lyrics 'mem - ber when you're stand - ing in the val - ley of de - ci - sion, and the'. The piano accompaniment features a melodic line in the right hand and a bass line in the left hand. A long, sweeping line connects the vocal line and the piano accompaniment across both measures, indicating a sustained or legato performance.

32

ad - ver - sar - y says, "Give in," just hold

Ah Just hold

32

Detailed description: This system contains measures 32 and 33. The vocal line continues with the lyrics 'ad - ver - sar - y says, "Give in," just hold'. The piano accompaniment has a melodic line in the right hand and a bass line in the left hand. A long, sweeping line connects the vocal line and the piano accompaniment across both measures, indicating a sustained or legato performance.

34 on, my God will— show up, yes— and He will

34 on. Show up.

This block contains the first system of music, measures 34 and 35. It features a vocal line and a piano accompaniment. The key signature is one sharp (F#) and the time signature is 4/4. The vocal line starts with a quarter rest, followed by a half note 'on,' and a quarter note 'my'. The piano accompaniment consists of chords in the right hand and single notes in the left hand.

1:55 SOLO and CHOIR

36 take you through the fire— a - gain.—

This block contains the second system of music, measures 36 and 37. It features a vocal line and a piano accompaniment. The key signature is one sharp (F#) and the time signature is 4/4. A box above the staff indicates a time signature change to 2/4 at measure 36. The vocal line has a quarter rest, followed by a half note 'take', a quarter note 'you', a quarter note 'through', a quarter note 'the', a quarter note 'fire', a quarter rest, a quarter note 'a', a quarter note 'gain', and a quarter rest. The piano accompaniment features chords in the right hand and single notes in the left hand.

SOLO

38 I know with-in— my - self that I would sure - ly per - ish, but if I

This block contains the third system of music, measure 38. It features a vocal line. The key signature is one sharp (F#) and the time signature is 4/4. The vocal line starts with a quarter rest, followed by a half note 'I', a quarter note 'know', a quarter note 'with-in', a quarter rest, a quarter note 'my', a quarter note 'self', a quarter rest, a quarter note 'that', a quarter note 'I', a quarter note 'would', a quarter note 'sure', a quarter note 'ly', a quarter note 'per', a quarter note 'ish', a quarter rest, a quarter note 'but', a quarter note 'if', a quarter note 'I', and a quarter rest.

40 trust the hand of— God, I know He'll

40 shield the flames a - gain,—

CHOIR (SOLO continue ad lib.)

This block contains the fourth system of music, measures 40 and 41. It features a vocal line and a piano accompaniment. The key signature is one sharp (F#) and the time signature is 4/4. A box above the staff indicates a time signature change to 2/4 at measure 40. The vocal line has a quarter rest, a quarter note 'trust', a quarter note 'the', a quarter note 'hand', a quarter rest, a quarter note 'of', a quarter note 'God', a quarter rest, a quarter note 'I', a quarter note 'know', a quarter note 'He'll', a quarter rest, a quarter note 'shield', a quarter note 'the', a quarter note 'flames', a quarter rest, a quarter note 'a', a quarter note 'gain', and a quarter rest. The piano accompaniment features chords in the right hand and single notes in the left hand.

2:13

a - gain. Whoa, whoa!

42

ff

He nev - er prom - ised that the cross would not get heav - y, and the

44

hill would not be hard to climb.

46

He nev - er of - fered our vic - t'ries with - out fight - ing, but He said

48

50 help would al - ways come in time, in time! Just re -

Musical notation for measures 50-51, including vocal line and piano accompaniment.

52 mem-ber when you're stand - ing in the val - ley of de - ci - sion, and the

Musical notation for measures 52-53, including vocal line and piano accompaniment.

54 ad - ver - sa - ry says, "Give in," just hold

CHOIR

Musical notation for measures 54-55, including vocal line and piano accompaniment.

56 *SOLO* My God will and He will

on, show up,

Musical notation for measures 56-57, including vocal line and piano accompaniment.

SOLO and CHOIR

58

take you through the fire — a - gain. — Just re -

Musical notation for measures 58-59, featuring a treble and bass clef staff with lyrics: "take you through the fire — a - gain. — Just re -".

60

mem-ber when you're stand - ing — in the val - ley of — de - ci - sion, and the

Musical notation for measures 60-61, featuring a treble and bass clef staff with lyrics: "mem-ber when you're stand - ing — in the val - ley of — de - ci - sion, and the".

CHOIR

62

ad - ver - sar - y says, "Give — in," — just hold —

Musical notation for measures 62-63, featuring a treble and bass clef staff with lyrics: "ad - ver - sar - y says, "Give — in," — just hold —".

SOLO

64

My God will — yes, He will, and He will

on, show up,

64

Musical notation for measures 64-65, featuring a treble and bass clef staff with lyrics: "My God will — yes, He will, and He will on, show up,".

66 take you through the fire — a - gain. — Hold on, — My Lord will
take you through the fire — a - gain. — Just hold — on. My Lord will

66

Detailed description: This system contains three staves of music for measures 66-68. The top staff is the vocal line, the middle staff is the piano accompaniment, and the bottom staff is the bass line. The key signature has three flats (B-flat, E-flat, A-flat) and the time signature is 4/4. The lyrics are: 'take you through the fire — a - gain. — Hold on, — My Lord will' on the first line, and 'take you through the fire — a - gain. — Just hold — on. My Lord will' on the second line.

69 show up, and He will take you through the fire — a - gain. — a - gain and a - gain,
show up. Take you through the fire — a - gain, — a - gain,

69

Detailed description: This system contains three staves of music for measures 69-71. The top staff is the vocal line, the middle staff is the piano accompaniment, and the bottom staff is the bass line. The key signature has three flats and the time signature is 4/4. The lyrics are: 'show up, and He will take you through the fire — a - gain. — a - gain and a - gain,' on the first line, and 'show up. Take you through the fire — a - gain, — a - gain,' on the second line.

72 — through the fire — a - gain! — *rit.*
— a - gain! —

72

Detailed description: This system contains three staves of music for measures 72-74. The top staff is the vocal line, the middle staff is the piano accompaniment, and the bottom staff is the bass line. The key signature has three flats and the time signature is 4/4. The lyrics are: '— through the fire — a - gain! —' on the first line, and '— a - gain! —' on the second line. A 'rit.' (ritardando) marking is placed above the vocal line in measure 73.